

ROLLER GUIDES



3

FK + GG

for counterweight and car

RFG + RFGK

for spring loaded performance

RS

for L-frames

GGW + RFGW

for angular guide

TRF

Tandem spring loaded roller guides

Special roller guides



■ MADE
■ IN
■ GERMANY



ETN[®]-roller guides **GG** for counterweight



Our **roller guides GG and FK** were developed for counterweight and yoke guide respective centre guided rope and hydraulic elevators.

The roller trestle consists of a high-strength light metal alloy.

All rollers have a **coating** out of **Vulkollan[®]**. The standard hardnesses are **65°, 80° and 93° Shore A**.

Vulkollan[®] has a small rolling resistance.

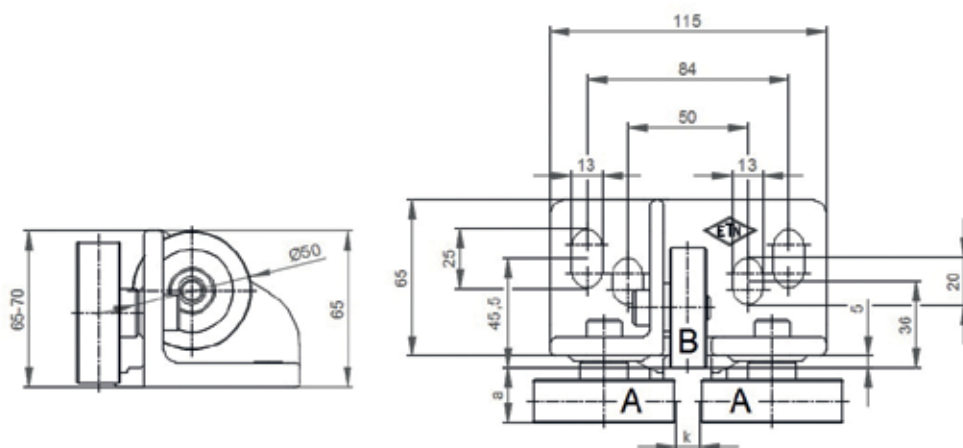
It is noise and oscillation absorbing with the least settling phenomenon of all highly loadable elastomers and has an excellent resistance to wear. It also is resistant to fat and oil.

The rollers are adjustable with **oblong holes**. Compared to the eccentric version the front rollers are always parallel. **The coatings can not be squeezed disproportionately** like during the eccentric adjusting. Thereby continuous deforming (flattening), erratically run and distortion in the roller trestle are prevented.

The guide face roller is adjusted by the oblong holes in the roller trestle.

The dimensions for the fixing holes are chosen for an easy replacement with guide shoes WSMK, WSMKL, WSM, WSML and WSMLN.

The adjustment of the rollers please refer to the installation instructions - **available on request**.



Type	Art.no.	VU-coating [° Shore A]	Roller A [mm]	Roller B [mm]	Total height [mm]	Depth [mm]	Max. load on roller A at 2,5 m/s	a [mm]	k [mm]	Weight [kg]
Roller guide GG for counterweight and yoke guide										
GG 1	300 050	93	Ø 50 x 18	Ø 50 x 15	65	93	900 N	23	5 - 16	0,8
GG 2	300 051	93	Ø 60 x 18	Ø 50 x 15	65	93	1.050 N	23	5 - 16	0,9
GG 3	300 052	80	Ø 50 x 18	Ø 50 x 15	65	93	450 N	23	5 - 16	0,8
GG 4	300 053	80	Ø 60 x 18	Ø 50 x 15	65	93	550 N	23	5 - 16	0,9
GG 5	300 054	93	Ø 70 x 20/12	Ø 50 x 15	70	95	1.050 N	25	5 - 9	1,0
GG 6	300 055	80	Ø 70 x 20/12	Ø 50 x 15	70	95	450 N	25	5 - 9	1,0
GG 7	300 053-W	65	Ø 60 x 18	Ø 50 x 15	65	93	385 N	23	5 - 16	0,9
GG 8	300 055-W	65	Ø 70 x 20/12	Ø 50 x 15	70	95	315 N	25	5 - 9	1,0

Further details on request

„Vulkollan[®]“ is a registered trademark of Covestro Group

Replacement rollers GG for ETN®-roller guides

Spare roller with or without axle					
Roller guide	Art.no.	Quantity	Roller (A/B)*	Art.no. Roller without axle	Art.no. Roller with axle
GG1	300 050	1	B	450 004	453 000
		2	A	450 003	453 001
GG2	300 051	1	B	450 004	453 000
		2	A	450 005	453 002
GG3	300 052	1	B	452 004	453 003
		2	A	452 003	453 004
GG4	300 053	1	B	452 004	453 003
		2	A	452 005	453 005
GG5	300 054	1	B	450 004	453000
		2	A	450 109	453006
GG6	300 055	1	B	452 004	453 003
		2	A	450 253	453 007
GG7	300 053-W	1	B	450 281	453 008
		2	A	450 280	453 009
GG8	300 055-W	1	B	450 281	453 008
		2	A	450 249	453 010

Description: A= lateral roller / B= roller for bore-hole gauge

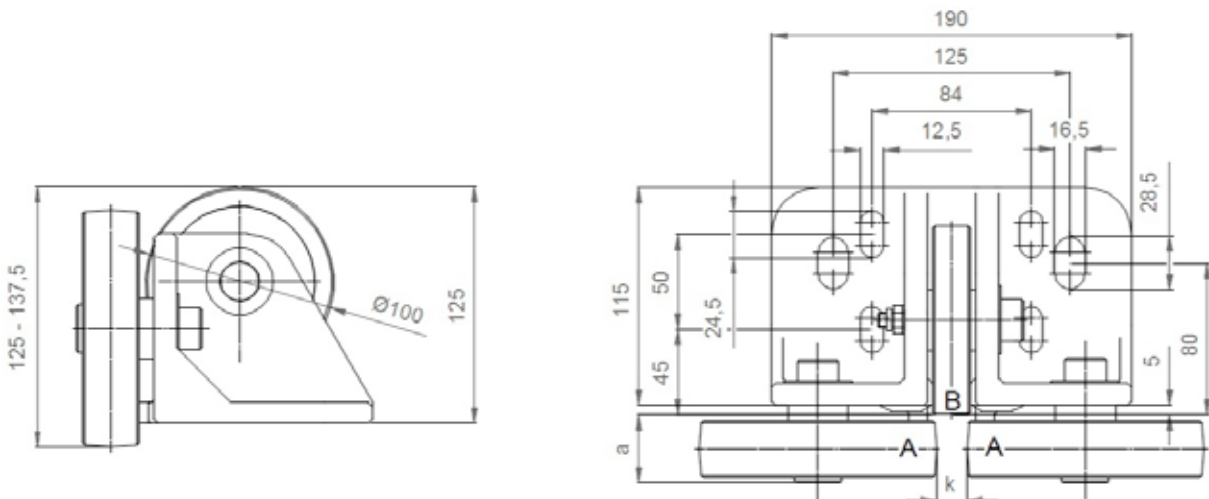
ETN[®]-roller guides FK-ST for car (rollers with steel core)



See ETN[®] roller guide GG, FK-ST and FK-AL

In addition, all rollers of FK are Fitted with **2 ball bearings**.

Standard pads are made out of **Vulkollan[®]** with 80° or 93° Shore A. Other Shore hardnesses of 65°, 96° and 98° are possible upon request. Soft rollers of 80° Shore suppress noises very well, but they only tolerate low loads. The harder the roller coating, the higher is the potential load.

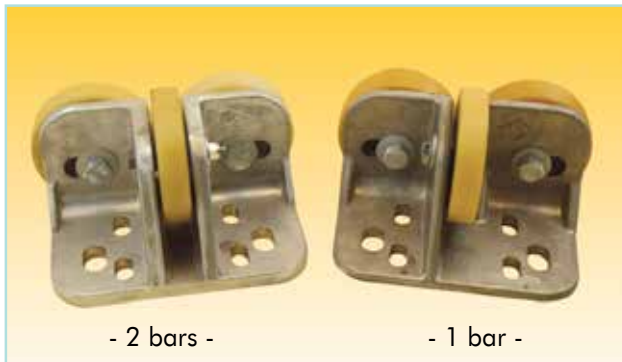


Type	Art.no.	VU-coating [° Shore A]	Roller A [mm]	Roller B [mm]	Total height [mm]	Depth [mm]	Max. load on roller A at 2,5 m/s	a [mm]	k [mm]	Weight [kg]
Roller guide FK-ST for car										
FK-ST 1-S	300 060-S	80	Ø 100 x 25	Ø 100 x 20	125	151	1.100 N	31	5 - 20	4,6
FK-ST 1	300 060	93	Ø 100 x 25	Ø 100 x 20	125	151	2.100 N	31	5 - 20	4,6
FK-ST 2-S	300 061-S	80	Ø 100 x 30	Ø 100 x 20	125	156	1.300 N	36	5 - 20	4,9
FK-ST 2	300 061	93	Ø 100 x 30	Ø 100 x 20	125	156	2.500 N	36	5 - 20	4,9
FK-ST 3-S	300 062-S	80	Ø 100 x 40	Ø 100 x 20	125	166	1.600 N	46	5 - 20	5,6
FK-ST 3	300 062	93	Ø 100 x 40	Ø 100 x 20	125	166	3.100 N	46	5 - 20	5,6
FK-ST 4-S	300 063-S	80	Ø 125 x 30	Ø 100 x 20	137,5	156	1.500 N	36	5 - 16	6,7
FK-ST 4	300 063	93	Ø 125 x 30	Ø 100 x 20	137,5	156	2.800 N	36	5 - 16	6,7
FK-ST 5	300 064	93	Ø 125 x 40	Ø 100 x 20	137,5	166	3.700 N	46	5 - 16	7,5
FK-ST 6	300 065	96 (93)	Ø 125 x 40	Ø 100 x 20	137,5	166	5.200 N	46	5 - 16	7,5

Further details on request

„Vulkollan[®]“ is a registered trademark of Covestro Group

Replacement rollers FK for ETN®-roller guides (steel core)



When choosing your spare parts, please note which version is needed ("1 bar" or "2 bars").

Spare roller with or without axle						
Roller guide	Art.no.	Quantity	Roller (A/B)*	Art.no. Roller without axle	Art.no. Roller with axle	
					1 bar	2 bars
FK-ST 1	300 060	1	B	450 056-A	453 019	453 055
		2	A	450 032-D	453 020	
FK-ST 1-S	300 060-S	1	B	452 056	453 031	453 056
		2	A	452 032	453 039	
FK-ST 2	300 061	1	B	450 056-A	453 019	453 055
		2	A	450 055-A	453 021	
FK-ST 2-S	300 061-S	1	B	452 056	453 031	453 056
		2	A	450 320	453 040	
FK-ST 3	300 062	1	B	450 056-A	453 019	453 055
		2	A	450 058	453 022	
FK-ST 3-S	300 062-S	1	B	452 056	453 031	453 056
		2	A	450 061	453 041	
FK-ST 4	300 063	1	B	450 056-A	453 019	453 055
		2	A	450 031-A	453 023	
FK-ST 4-S	300 063-S	1	B	452 056	453 031	453 056
		2	A	450 031-W	453 032	
FK-ST 5	300 064	1	B	450 056-A	453 019	453 055
		2	A	450 054	453 024	
FK-ST 6	300 065	1	B	450 056-A	453 019	453 055
		2	A	450 077	453 025	

Description: A= lateral roller / B= roller for bore-hole gauge

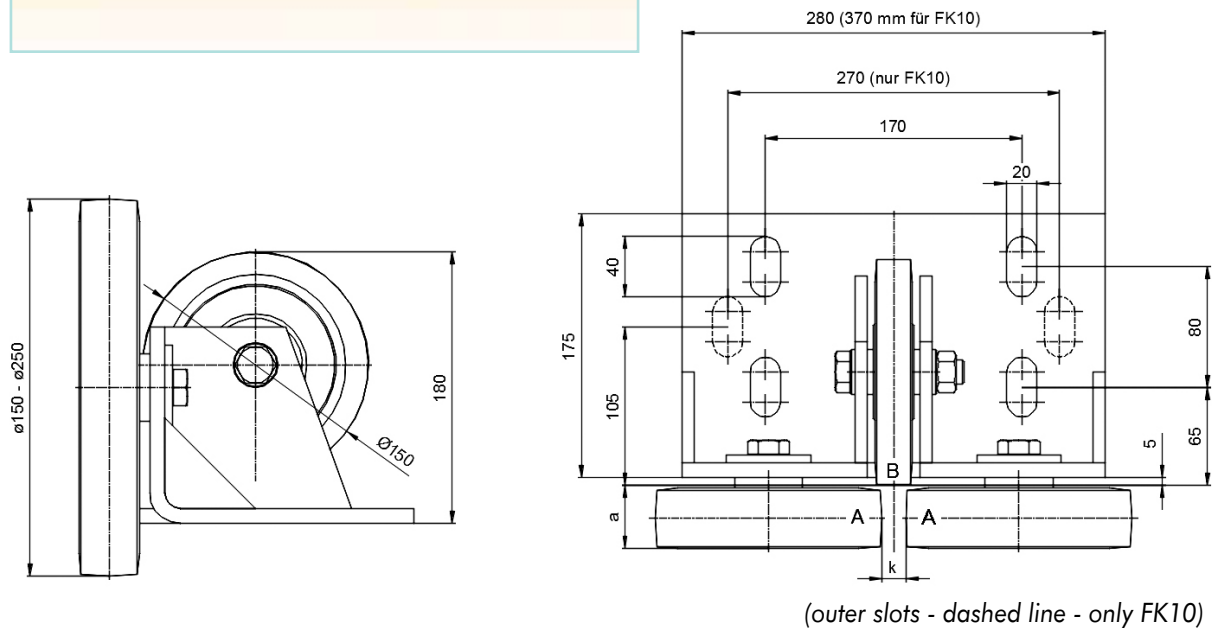
ETN®-roller guides FK-ST for higher loads (rollers with **steel core**)



See ETN®-roller guides FK-ST 1-6

Deviation:

Roller trestle consists of a steel frame in a galvanized finish



Type	Art.no.	VU-coating [° Shore A]	Roller A [mm]	Roller B [mm]	Total height [mm]	Depth [mm]	Max. load on roller A at 2,5 m/s	a [mm]	k [mm]	Weight [kg]
Roller guide FK-ST for higher loads										
FK-ST 7	300 066	93	Ø 150 x 40	Ø 150 x 25	180	222	4.900 N	42	9 - 20	15,7
FK-ST 8	300 067	93	Ø 180 x 40	Ø 150 x 25	180	222	5.800 N	42	9 - 20	17,5
FK-ST 9	300 068	93	Ø 200 x 40	Ø 150 x 25	200	222	6.400 N	42	9 - 19	19,4
FK-ST 10	300 069	93	Ø 250 x 40	Ø 150 x 25	250	224	8.800 N	42	9 - 32	24,7

Further details on request

Replacement rollers FK for higher loads for ETN®-roller guides

Spare roller with or without axle					
Roller guide	Art.no.	Quantity	Roller (A/B)*	Art.no. Roller without axle	Art.no. Roller with axle
FK-ST 7	300 066	1	B	450 207	453 026
		2	A	450 208	453 027
FK-ST 8	300 067	1	B	450 207	453 026
		2	A	450 214	453 028
FK-ST 9	300 068	1	B	450 207	453 026
		2	A	450 209	453 029
FK-ST 10	300 069	1	B	450 207	453 026
		2	A	450 060	453 030

Description: A= lateral roller / B= roller for bore-hole gauge

ETN[®]-roller guides FK-AL for car (rollers with aluminium core)

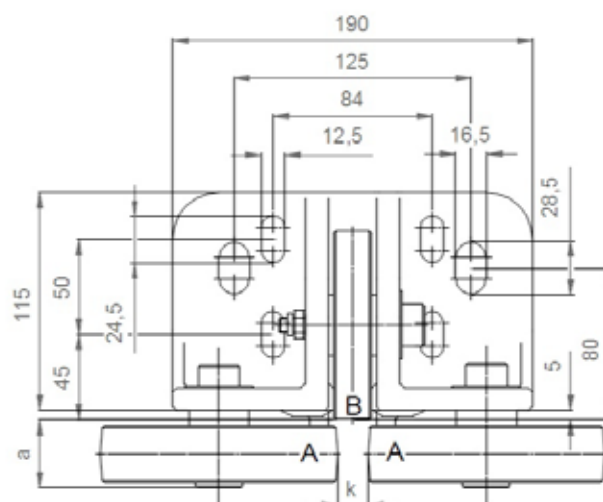
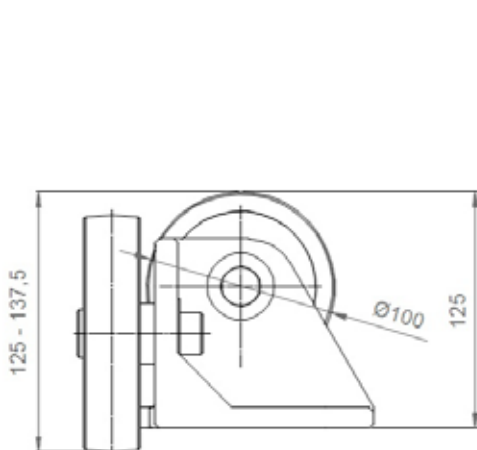


See ETN[®]-roller guide GG

In addition, all rollers of FK are Fitted with **2 ball bearings**. The hardness of roller coverings is usually measured in Shore A.

Standard pads are made out of Vulkollan[®] with 80° or 93° Shore A. Other Shore hardnesses of 65°, 96° and 98° are possible upon request. Soft rollers of 80° Shore suppress noises very well, but they only tolerate low loads. The harder the roller coating, the higher is the potential load.

= no rust on core

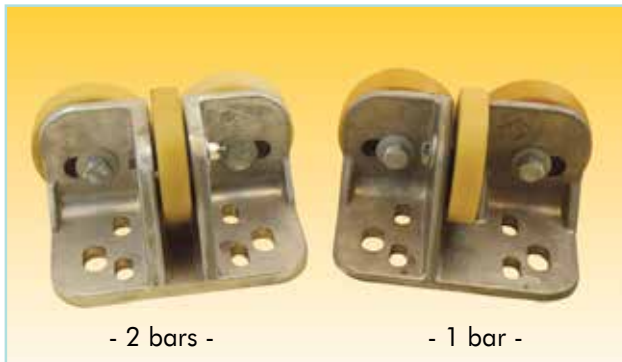


Type	Art.no.	VU-coating [° Shore A]	Roller A [mm]	Roller B [mm]	Total height [mm]	Depth [mm]	Max. load on roller A at 2,5 m/s	a [mm]	k [mm]	Weight [kg]
roller guide FK-AL for car										
FK-AL 1-S	300 611	80	Ø 100 x 25	Ø 100 x 20	125	151	1.100 N	31	5 - 20	3,2
FK-AL 1	300 601	93	Ø 100 x 25	Ø 100 x 20	125	151	2.100 N	31	5 - 20	3,2
FK-AL 2	300 602	93	Ø 100 x 30	Ø 100 x 20	125	156	2.500 N	36	5 - 20	3,4
FK-AL 3	300 603	93	Ø 100 x 40	Ø 100 x 20	125	166	3.100 N	46	5 - 20	3,7
FK-AL 4-S	300 600	80	Ø 125 x 30	Ø 100 x 20	137,5	156	1.500 N	36	5 - 16	4,1
FK-AL 4	300 604	93	Ø 125 x 30	Ø 100 x 20	137,5	156	2.800 N	36	5 - 16	4,1
FK-AL 5	300 605	93	Ø 125 x 40	Ø 100 x 20	137,5	166	3.700 N	46	5 - 16	4,5

Further details on request

„Vulkollan[®]“ is a registered trademark of Covestro Group

Replacement rollers FK-AL for ETN®-roller guides (rollers with aluminium core)

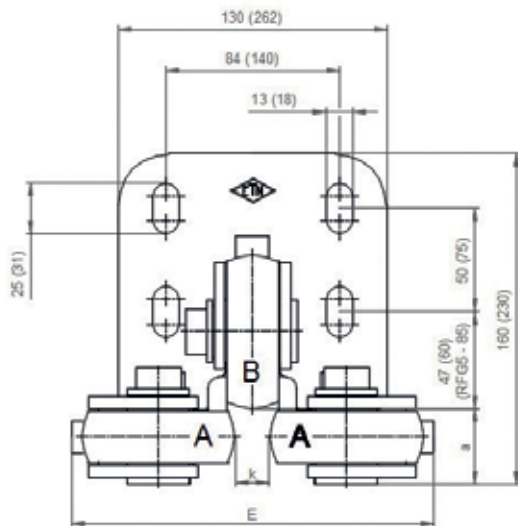
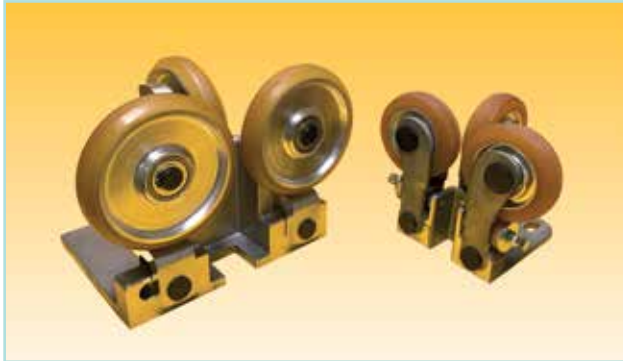


When choosing your spare parts, please note which version is needed ("1 bar" or "2 bars").

Spare roller with or without axle						
Roller guide	Art.no.	Quantity	Roller (A/B)*	Art.no. Roller without axle	Art.no. Roller with axle	
					1 bar	2 bars
FK-AL 1	300 601	1	B	452 057	453 043	453 059
		2	A	452 150	453 044	
FK-AL 1-S	300 611	1	B	452 056-A	453 049	453 058
		2	A	452 155	453 050	
FK-AL 2	300 602	1	B	452 057	453 043	453 059
		2	A	452 151	453 045	
FK-AL 3	300 603	1	B	452 057	453 043	453 059
		2	A	452 152	453 046	
FK-AL 4	300 604	1	B	452 057	453 043	453 059
		2	A	452 154	453 047	
FK-AL 4-S	300 600	1	B	452 056-A	453 049	453 058
		2	A	452 031-A	453 051	
FK-AL 5	300 605	1	B	452 057	453 043	453 059
		2	A	452 153	453 048	

Description: A= lateral roller / B= roller for bore-hole gauge

ETN®-Spring loaded roller guides RFGK + RFG



Dimensions for roller guide RFGK (RFG in parenthesis)

The **spring-loaded roller guides RFGK** and **RFG** are developed for centre guided rope, silent and speed cable elevators ($v \leq 5$ m/s).

The crowned rollers have a crowned coating out of **Vulkollan®** and offer an excellent running comfort with high wear resistance. The standard hardness is **80° Shore A**.

Like all our rollers here also **Vulkollan®** was chosen because of its ideal characteristics as roller coating (see GG + FK).

Vulkollan® has a small rolling resistance. It is noise and oscillation absorbing with the least settling phenomenon of all highly loadable elastomers and an excellent resistance to wear. It also is **resistant to fat and oil**.

The damping of guide face and guide roller will be ensured by **a combination of Vulkollan® homogeneous and cellular** with excellent suspension properties.

The main advantage in relation to a steel spring is the nonlinear spring characteristic curve of the absorbing material.

Because of the typical progressive attenuation characteristic curve, **a break down is impossible** – there is no vibration afterwards. Moreover the **absorption is absolutely noiseless**.

The spring deflection and the damping action are **infinitely variable**.

The dimensions for the fixing holes are chosen for an **easy replacement** with comparable roller guides.

The guides are delivered pre-assembled according to your information. See table below for different variations.

Type	Art.no.	VU-coating [° Shore A]	Roller A [mm]	Roller B [mm]	Total height [mm]	Depth [mm]	Widths E [mm]	max. Car load [kg]	a [mm]	k [mm]	Weight [kg]
RFGK spring loaded roller guide, small											
RFGK 1	300 090	80	∅ 75 x 25	∅ 75 x 25	154	160	≈ 175	2.000 ¹⁾	36,5	5 - 16	3,1
RFGK 1A ^{***)}	300 090-A	80	∅ 75 x 25	∅ 100 x 25	180	160	≈ 175	2.000 ¹⁾	32	5 - 16	3,2
RFGK 2	300 091	80	∅ 100 x 25	∅ 100 x 25	180	160	≈ 215	2.500 ¹⁾	36,5	5 - 16	3,5
RFGK 2A ^{***)}	300 091-A	80	∅ 100 x 25	∅ 100 x 25	180	160	≈ 215	2.500 ¹⁾	32	5 - 16	3,5
RFG spring loaded roller guide											
RFG 1	300 080	80	∅ 150 x 30	∅ 150 x 30	234	230	≈ 320	2.500 ¹⁾	48	9 - 20	11,6
RFG 3	300 082	80	∅ 200 x 30	∅ 200 x 30	284	230	≈ 430	3.500 ¹⁾	48	9 - 20	13,1
RFG 5 ^{****)}	300 080-A	80	∅ 150 x 30	∅ 200 x 30	284	230	≈ 430	2.500 ¹⁾	23	9 - 20	12,1

Roller guides maximum car load depends on car dimensions and utilization. The stated load values are just used for orientation and may be much higher.

¹⁾ max. car load at 4 m/s;

²⁾ max. car load at 5 m/s

^{***)} for short rail heads as i.e. rail measurement 50,0 x 50,0 x 5,0 mm – roller coating at RFGK 1A and RFGK 2A recorded (nor for 45,0 x 45,0 x 5,0 mm)

^{****)} for short rail heads

Note Rollers are also available in other hardnesses.

„Vulkollan®“ is a registered trademark of Covestro Group

Replacement rollers RFGK for ETN®-roller guides

Roller guide	Art.no.	Quantity	Roller (A/B)*	Art.no. Roller without axle
RFGK 1	300 090	1	B	450 087
		2	A	
RFGK 1A	300 090-A	1	B	450 088-A
		2	A	450 087-A
RFGK 2	300 091	1	B	450 088
		2	A	
RFGK 2A	300 091-A	1	B	450 088-A
		2	A	

*Description: A= lateral roller / B= roller for bore-hole gaugeroller

3

Replacement rollers RFG for ETN®-roller guides

Roller guide	Art.no.	Quantity	Roller (A/B)*	Art.no. Roller without axle	Art.no. Roller with axle
RFG 1	300 080	1	B	450 069	453 062
		2	A		
RFG 3	300 082	1	B	450 073	453 064
		2	A		
RFG 5	300 080-A	1	B	450 073	453 064
		2	A	450 069	453 062

*Description: A= lateral roller / B= roller for bore-hole gaugeroller

ETN®-Tandem spring loaded roller guide TRF with rollers \varnothing 100 mm For center guided, high speed comfort-elevators

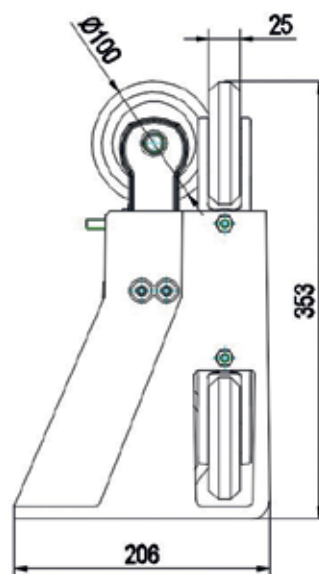
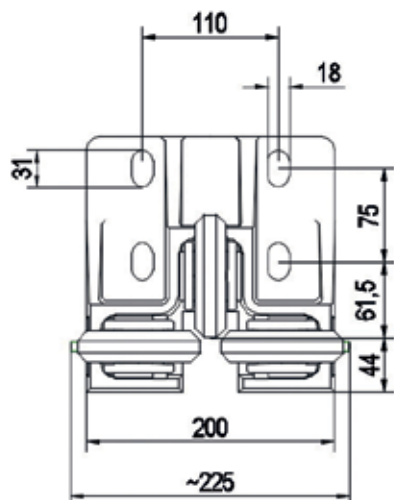


All rollers are separately spring-loaded. The springs are out of highly elastic **Vulkollan®** (VU), firmly connected with screws to adjust the spring paths. The damping force of each roller is individually infinitely adjustable. Compared with a steel spring is no rebound.

The crowned coating is out of **Vulkollan®**, because of the special characteristics like high load capacity and excellent elasticity.

To achieve a comfortable quick run, we have chosen a hardness of 80° Shore A. Speeds up to 7 m/s are possible. VU is a highly wear resistant material with excellent damping properties. It is suitable with its excellent damping and elastic properties for roller coverings.

Roller guide	Art.no.	Roller [mm]	Spare roller
TRF 100	300 466	\varnothing 100 x 25	453 066



„Vulkollan®“ is a registered trademark of Covestro Group

Further details on request

ETN®-Tandem spring loaded roller guide TRF with rollers \varnothing 150 mm

For center guided, high speed comfort-elevators



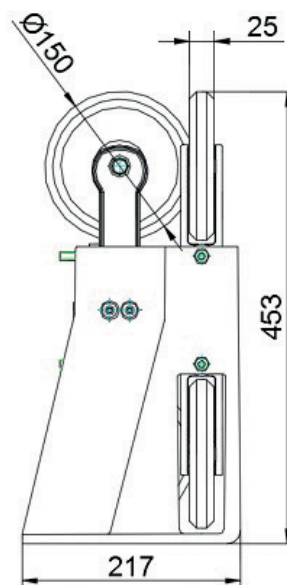
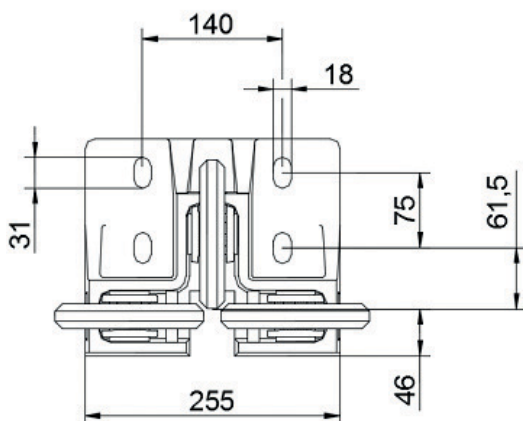
All rollers are separately spring-loaded. The springs are out of highly elastic **Vulkollan®** (VU), firmly connected with screws to adjust the spring paths. The damping force of each roller is individually infinitely adjustable. Compared with a steel spring is no rebound.

The crowned coating is out of **Vulkollan®**, because of the special characteristics like high load capacity and excellent elasticity.

To achieve a comfortable quick run, we have chosen a hardness of 80° Shore A. Speeds up to 7 m/s are possible. VU is a highly wear resistant material with excellent damping properties. It is suitable with its excellent damping and elastic properties for roller coverings.

3

Roller guide	Art.no.	Roller [mm]	Spare roller
TRF 150	300 355	\varnothing 150 x 25	453 067



ETN[®]-roller guides RS for L-frames (rollers with steel core)



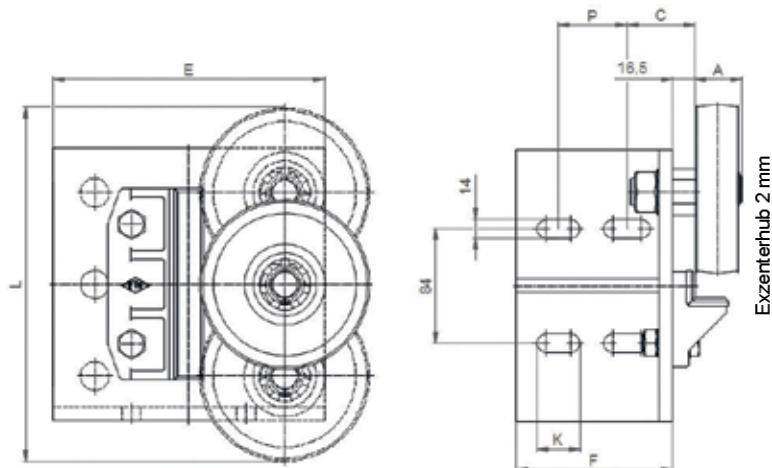
On request with aluminum core.



The roller guides RS consist of a steel trestle and depending on the load, of one or two rollers with **Vulkollan[®]** coating and eccentric pin.

For the face guiding and against possible uneven movements we use a divided guide shoe HSMG with insert out of ETN[®]-HM-1000.

This polyethylene is characterized by optimum sliding properties.



Type	Art.no.	Roller [pcs]	Dimension [mm]								VU-coating [° Shore A]	Capacity ^{*)} [N]	Weight [kg]
			Roller	A	C	E	F	K	L	P			
RS I roller guide for L-frame													
RS 1	300 070	1	Ø 125 x 30	34,5	50	200	75	35	150	-	93	2.800	6,1
RS 3	300 072	1	Ø 100 x 40	44,5	50	200	75	35	150	-	93	3.300	5,4
RS 4	300 073	1	Ø 125 x 40	44,5	50	200	75	35	150	-	93	3.750	6,4
RS 5	300 074	1	Ø 150 x 40	44,5	50	220	75	35	150	-	93	4.900	7,6
RS 7	300 076	1	Ø 150 x 40	44,5	50	220	75	35	150	-	96	6.400	7,6
RS 9	300 572	1	Ø 100 x 30	34,5	50	200	75	35	150	-	93	2.300	5,2
RS II roller guide for L-frame													
RS 2	300 071	2	Ø 125 x 30	34,5	53	200	115	32	260±4 ¹⁾	47	93	5.600	7,8
RS 3A	300 072-A	2	Ø 100 x 40	44,5	53	175	115	32	210±4 ¹⁾	47	93	6.600	8,1
RS 6	300 075	2	Ø 125 x 40	44,5	53	200	115	32	260±4 ¹⁾	47	93	7.500	8,7
RS 8	300 077	2	Ø 125 x 40	44,5	53	200	115	32	260±4 ¹⁾	47	96	9.800	8,7

¹⁾ according to adjustment of the eccentric pin

²⁾ load at 1 m/s; at higher speed reduced load carrying ability

„Vulkollan[®]“ is a registered trademark of Covestro Group

Replacement rollers RS for ETN®-roller guides

Spare roller with or without axle				
Roller guide	Art.no.	Quantity	Art.no. Roller without axle	Art.no. Roller with axle
RS 1	300 070	1	450 031-A	453 033
RS 2	300 071	2	450 031-A	453 033
RS 3	300 072	1	450 058	453 034
RS 4	300 073	1	450 054	453 035
RS 5	300 074	1	450 053	453 036
RS 6	300 075	2	450 054	453 035
RS 7	300 076	1	450 075	453 037
RS 8	300 077	2	450 077	453 038
RS 9	300 572	1	450 055-A	453 070

3

Replacement insert + guide shoe RS for ETN®-roller guides

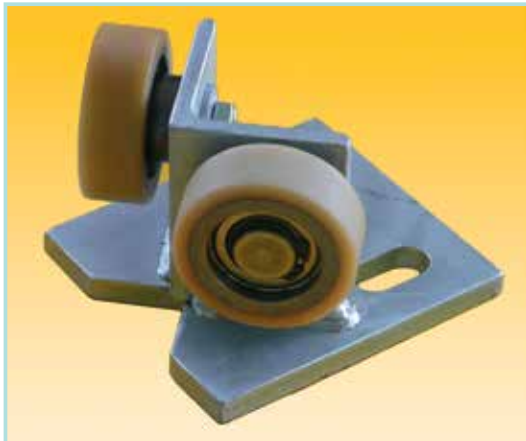
Roller guide	Art.no. spare insert	Art.no. spare guide holder
RS 1 - RS 9	309 057	300 014



Note

Our roller guides are designed for guide rails up to 16 mm width. Obviously they are also available without steel rack. Other guide rail widths on request.

ETN®- roller guides for angular guide **GGW**

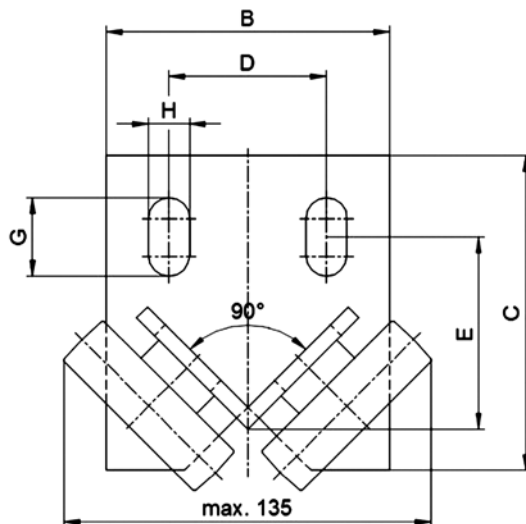


Our roller guides GGW have been developed for angled rails. The roller guide trestle is made of steel.

All rollers have an overwinded coating out of **Vulkollan®**.

The standard hardnesses are 65 °, 80 ° and 93 ° Shore A.

Vulkollan® has a low rolling resistance. The coating has low noise and damping properties. The wear resistance is excellent. Compared with fats and oils, it is stable.



	Type	Art.no.	VU-coating [° Shore A]	Dimension [mm]							
				Roller A	B	C	D	E	G	H	Total height
Haushahn	GGW 1*	300 057	93	Ø 50 x 18	90	100	50	61	25	13	75
	GGW 1*	300 057-A	93	Ø 50 x 18	90	100	60	61	25	13	75
	GGW 2*	300 058	93	Ø 60 x 18	90	100	50	61	25	13	80
	GGW 2*	300 058-A	93	Ø 60 x 18	90	100	60	61	25	13	80
	GGW 3*	300 059	93	Ø 75 x 20/10	90	100	50	61	25	13	87,5
	GGW 3*	300 059-A	93	Ø 75 x 20/10	90	100	60	61	25	13	87,5
	GGW 4*	300 056	80	Ø 75 x 20/10	90	100	50	61	25	13	87,5
	GGW 4*	300 056-A	80	Ø 75 x 20/10	90	100	60	61	25	13	87,5
Bauer KONE	GGW 5	300 046	93	Ø 50 x 18	115	125	80,5	87,5	36	17	77
	GGW 6	300 047	93	Ø 60 x 18	115	125	80,5	87,5	36	17	82
	GGW 7	300 048	93	Ø 75 x 20/10	115	125	80,5	87,5	36	17	89,5
	GGW 8	300 049	80	Ø 75 x 20/10	115	125	80,5	87,5	36	17	89,5
	GGW 9	300 086	93	Ø 100 x 30	120	113	60	54	-	14	127,5
	GGW 10	300 087	80	Ø 100 x 30	120	113	60	54	-	14	127,5
	GGW 11	300 088	93	Ø 125 x 30	120	113	60	54	-	14	140
	GGW 12	300 089	80	Ø 125 x 30	120	113	60	54	-	14	140

* Please note dimension „D“

„Vulkollan®“ is a registered trademark of Covestro Group

Replacement rollers GGW for ETN®-roller guides

Spare roller with or without axle				
Roller guide	Art.no.	Quantity	Art.no. Roller without axle	Art.no. Roller with axle
GGW 1	300 057	2	450 003	453 011
GGW 1	300 057-A	2	450 003	453 011
GGW 2	300 058	2	450 005	453 012
GGW 2	300 058-A	2	450 005	453 012
GGW 3	300 059	2	450 028	453 013
GGW 3	300 059-A	2	450 028	453 013
GGW 4	300 056	2	452 007	453 014
GGW 4	300 056-A	2	452 007	453 014
GGW 5	300 046	2	450 003	453 011
GGW 6	300 047	2	450 005	453 012
GGW 7	300 048	2	450 028	453 013
GGW 8	300 049	2	452 007	453 014
GGW 9	300 086	2	450 055-A	453 015
GGW 10	300 087	2	450 320	453 016
GGW 11	300 088	2	450 031-A	453 017
GGW 12	300 089	2	450 031-W	453 018

ETN[®]-spring loaded roller guide for angular guide RFGW



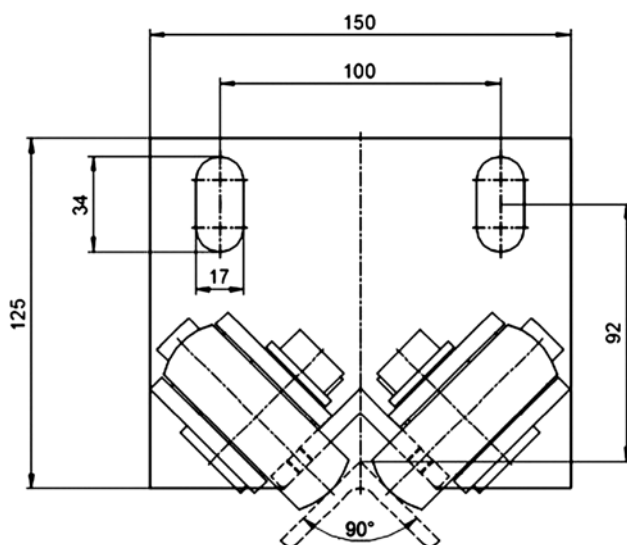
The roller guides RFGW are designed for angled rails, where particularly quiet operation is desired.

The two rollers have damping and absorption properties. They are resiliently mounted to compensate for irregularities and to achieve smoother ride.

All rollers have a coating out of **Vulkollan[®]**.

The standard hardnesses are 65°, 80° and 93° Shore A.

Vulkollan[®] has a low rolling resistance. The coating has low noise and damping properties. The wear resistance is excellent. Compared with fats and oils, it is stable.



Type	Art.no.	VU-coating [° Shore A]	Dimension [mm]		
			Roller	Total height	total width
RFGW 1	300 095	80	Ø 75 x 25	159	190
RFGW 2	300 095-A	80	Ø 100 x 25	184	205

Spare roller			
Roller guide	Art.no.	Quantity	Art.no. Roller without axle
RFGW 1	300 095	2	450 087
RFGW 2	300 095-A	2	450 088

„Vulkollan[®]“ is a registered trademark of Covestro Group